



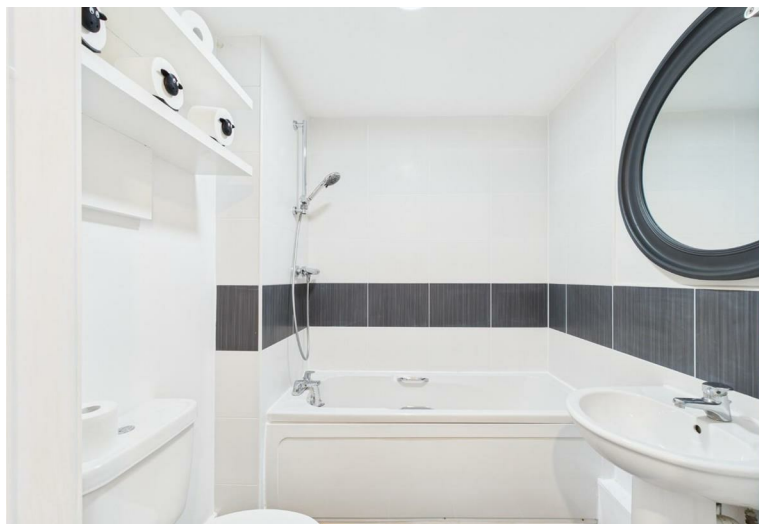
## 60 Weavers Mill Close

Crews Hole, Bristol, BS5 8FH

**Asking price £230,000**



# 60 Weavers Mill Close



## Description

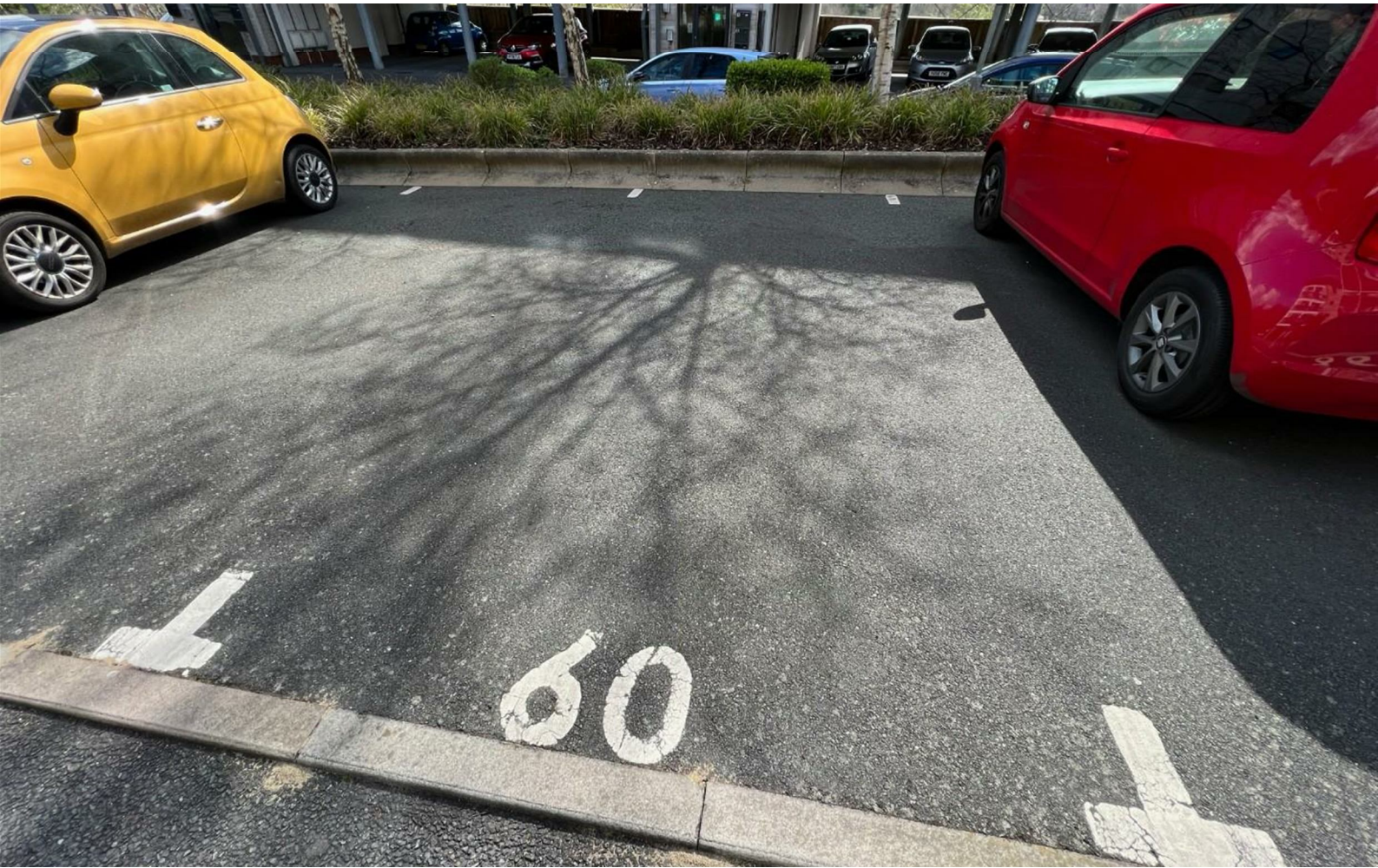
This first-floor apartment is a delightful find for those seeking a modern and inviting home. Boasting panoramic views.

Situated in the popular Weavers Mill development, residents can enjoy the tranquillity of green spaces while being within walking distance of local cafes, bars, and shops. This property truly is an absolute gem, offering a perfect blend of modern living and convenience in a vibrant community. Council Tax is band B (Bristol), making it an attractive option for those looking to settle in this lovely area. Don't miss the opportunity to make this stunning apartment your new home!

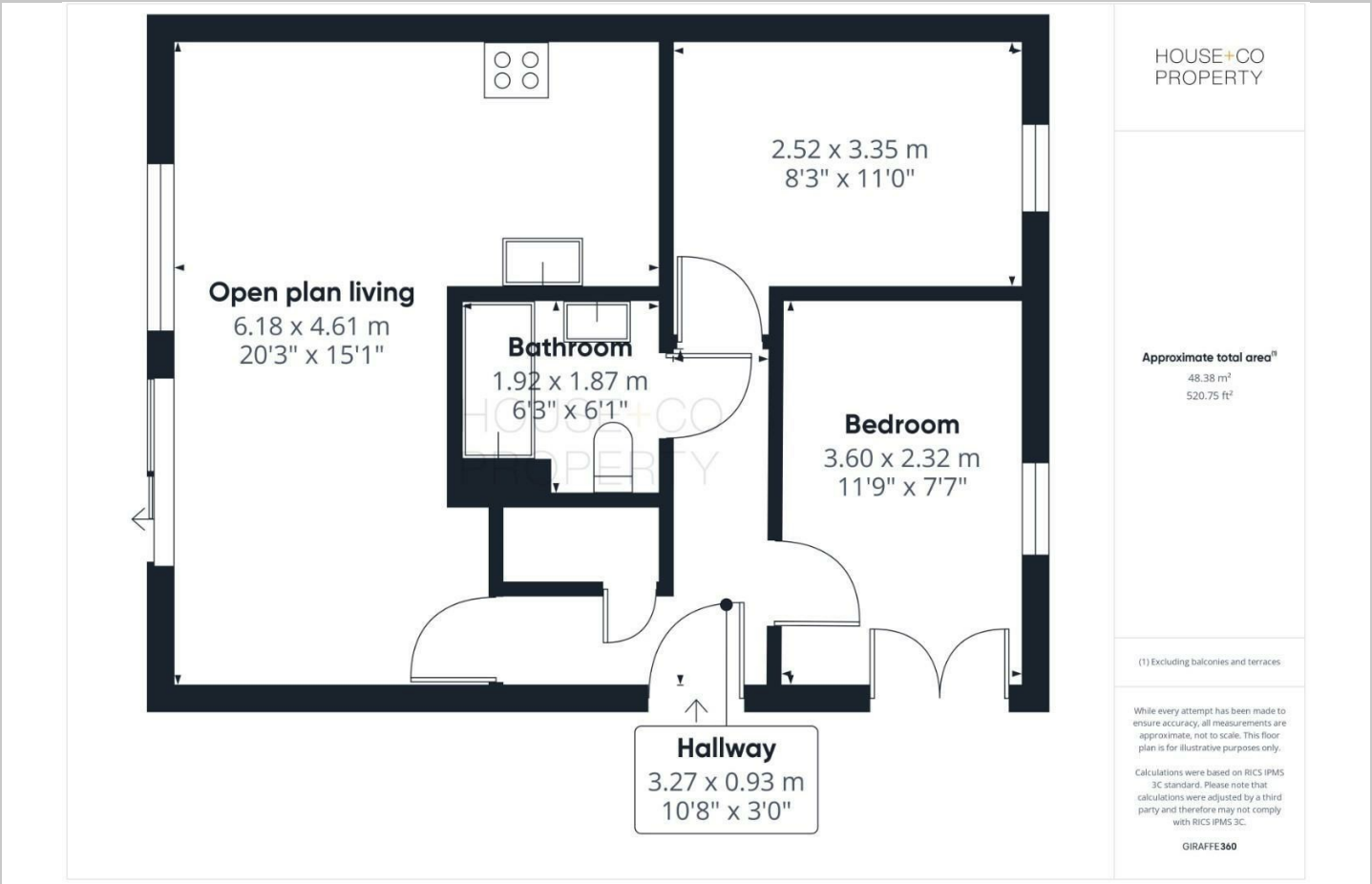
The apartment features a modern kitchen that flows into the living area, which is enhanced by a Juliet-style balcony, allowing natural light to flood the space. With two good sized double bedrooms, one of which includes a convenient walk-in wardrobe. plus bathroom with a shower over.

- FIRST FLOOR APARTMENT ■ 2 DOUBLE BEDROOMS WITH VIEWS
- OPEN PLAN LIVING
- SOUTH FACING JULIETTE BALCONY
- MODERN KITCHEN & BATHROOM
- ALLOCATED PARKING + BIKE STORE
- NO ONWARD CHAIN
- EASY ACCESS TO ST GEORGE / GEORGE ROAD

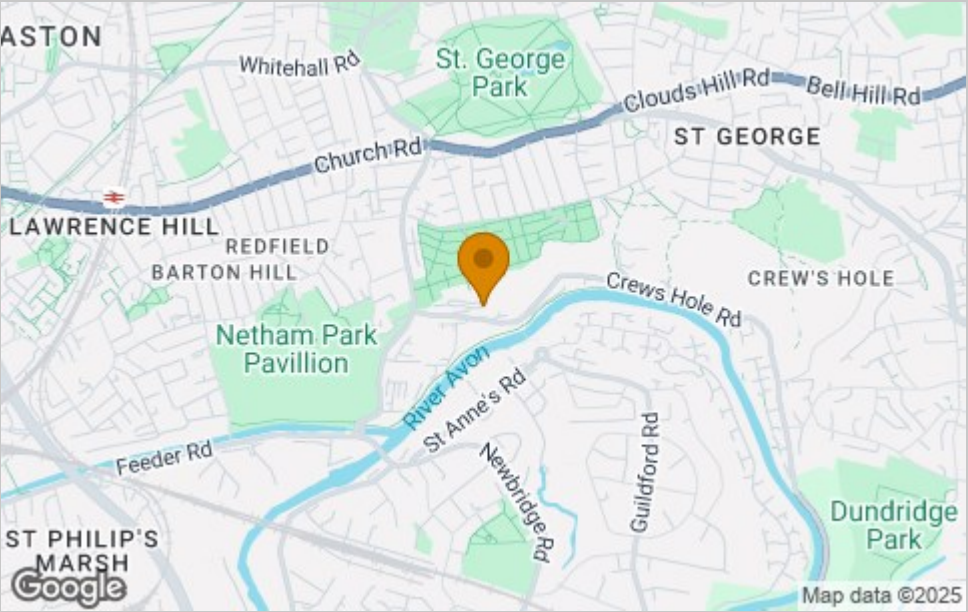




Floor Plan



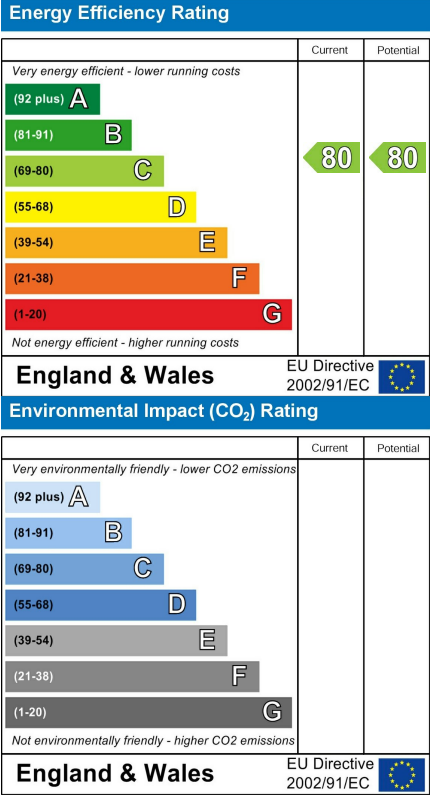
Area Map



Viewing

Please contact our House + Co Property (Sales) Office on 0117 907 0020 if you wish to arrange a viewing appointment for this property or require further information.

Energy Efficiency Graph



These particulars, whilst believed to be accurate are set out as a general outline only for guidance and do not constitute any part of an offer or contract. Intending purchasers should not rely on them as statements of representation of fact, but must satisfy themselves by inspection or otherwise as to their accuracy. No person in this firms employment has the authority to make or give any representation or warranty in respect of the property.